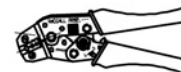


	PAGE
Joule effect soldering devices	3
Stripping tools.....	4-6
Pointer gauges	7
Soldering & assembly tools	8-10
Installation tools.....	11-12
Tool kits for semi-rigid and flexible cables.....	13-22
Crimp tools	23-25
Torque wrench.....	26-27
Insertion & extraction tools	28-30
Accessories	31-34



Compliant with European standards n° 89/336/CEE and 73/23/CEE (electromagnetic compatibility and low voltage)

It allows to solder :

- center contacts and bodies to semi-rigid cables,
- center contacts to flexible cables,
- solder pot receptacles.



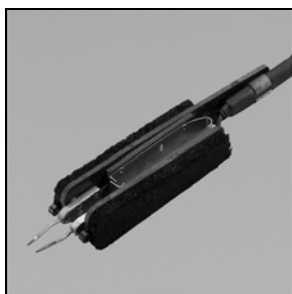
Photo 1



Photo 2

Part number	Photo	Power	Delivered with
R282 800 000	1	80 Watts	Pliers + electrode : R282 800 020
R282 800 001	2	200 Watts	Pliers : R282 800 011 Electrode : R282 800 022

OPTION FOR R282 800 001



Part number	Designation
R282 800 012	Pliers 80 Watts (*)
R282 800 020	Electrode

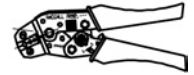
(*) Not compatible with **R282 800 000**

FUME EXTRACTION DEVICE



Radiall recommends to always carry out soldering operations in well ventilated areas and to make use of fume extraction equipment. Our fume extraction device complies also with European standards n° 89/336/CEE, 89/392/CEE and 73/23/CEE. Its flow is adjustable up to 240 m³ /h and it uses active coal filter.

Part number
R282 803 000



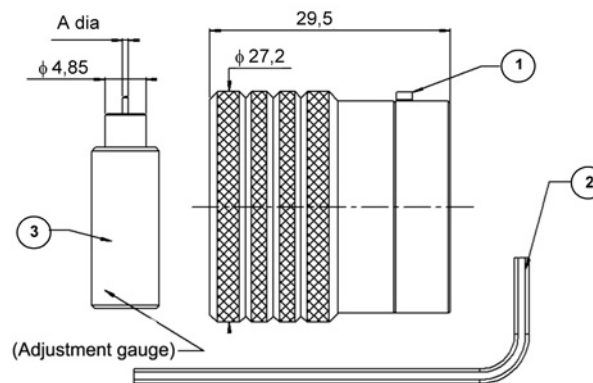
STRIPPING TOOL FOR SEMI-RIGID CABLE



Cable group	Part number
.085"	R282 051 000
.141"	R282 053 000
.116"	R282 058 000 to be used with cable holder R282 059 010
.250"	R282 054 000

This easy to use tool removes the cable's outer conductor and dielectric leaving the center conductor stripped to the proper length. It is supplied with a removal blade which can be ordered separately whenever required. Please specify P/N **R285 055 000** when ordering the replacement blade. Including a adjustment gauge and male hex key.

STRIPPING TOOL FOR MICROPOROUS SEMI-RIGID CABLE



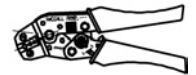
Cable group	Part number	Dimension A (mm)	Description
.085" microporous	R282 051 030	0.69	1 - R282 055 000 - Replacement stripping blade 2 - R282 344 150 - Hex 1.5 mm 3 - R282 864 112 - Replacement adjustment gauge
.141" microporous	R282 053 030	1.15	

Use these tools with cable holder **R282 059 010**.

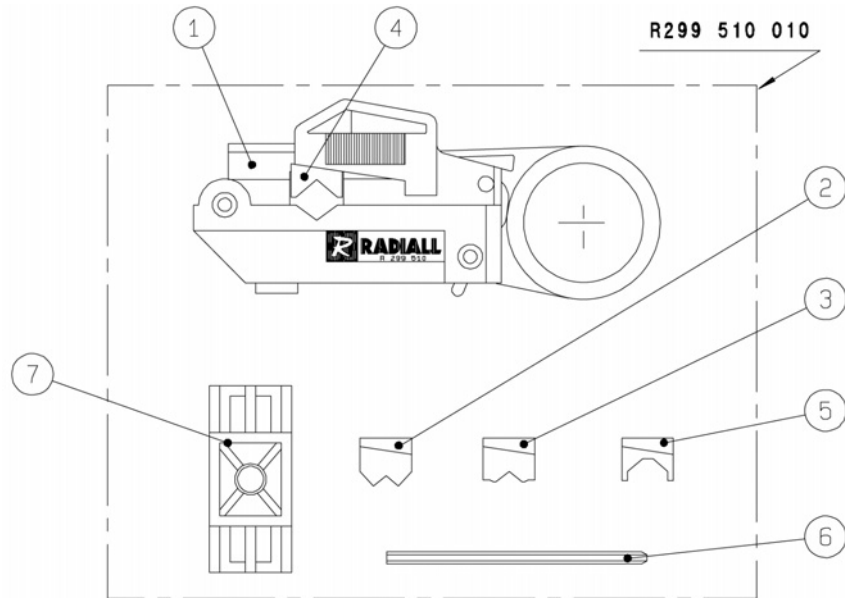
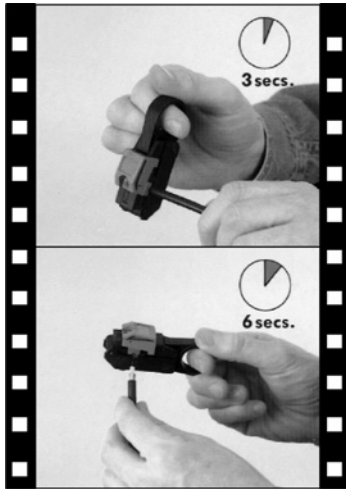
STRIPPING TOOL FOR CORRUGATED CABLES



Cable group	Part number
1/4" superflexible	R282 010 030
3/8" superflexible	R282 010 040
1/2" superflexible	R282 010 050
1/2" flexible	R282 011 050
7/8" flexible	R282 011 060

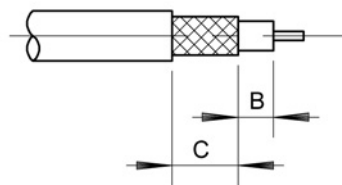
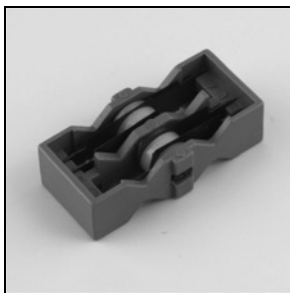


KIT R299 510 010 : STRIPPING TOOL FOR 2.5 TO 7.6 MM DIA. FLEXIBLE CABLES (without cassette)

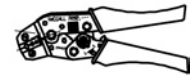


Part number	Designation
R299 510 010	STRIPPING TOOL 1 - Stripping tool 2 - White V guide for dia ext. cable 2.5 to 3 mm 3 - Red V guide for dia ext.cable 3 to 5 mm 4 - Blue V guide for dia ext.cable 5 to 6.4 mm 5 - Yellow V guide for dia ext.cable 6.4 to 7.6 mm 6 - Wrench 7 - Gauge

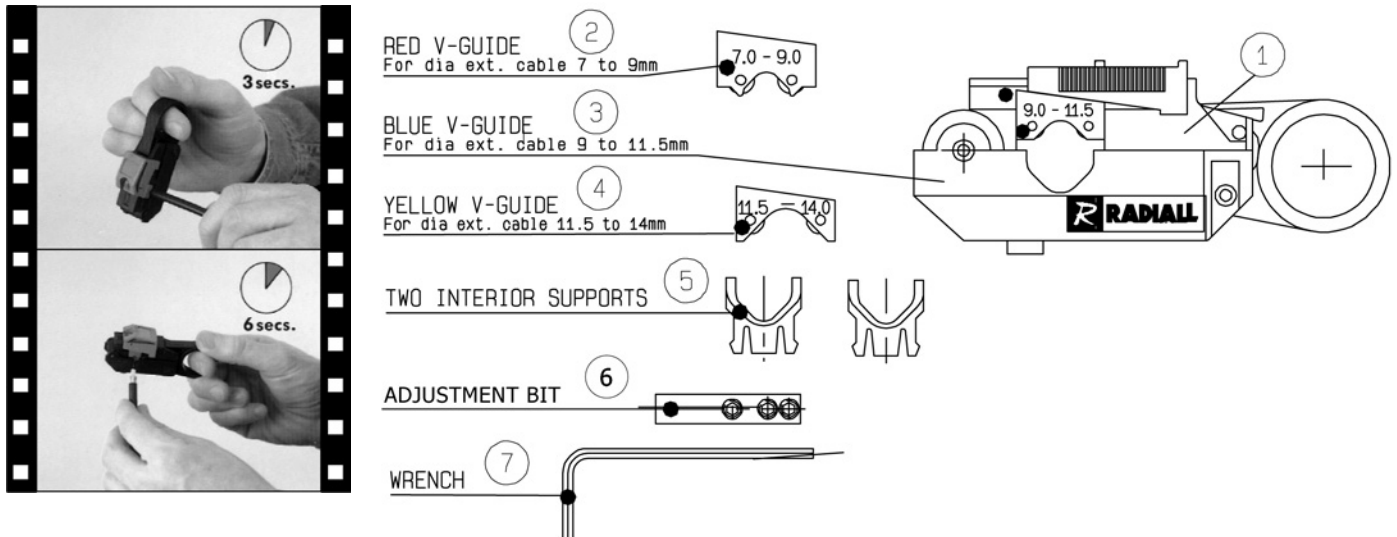
CASSETTES



Part number	Designation	Length B (mm)	Length C (mm)
R299 511 000	Green stripping cassette	5.1	7.1
R299 511 001	Brown stripping cassette	2.7	8.3
R299 511 011	Green stripping cassette	6	6.9
R299 511 012	Yellow stripping cassette	2	8
R299 511 013	Orange stripping cassette	3.5	6.5
R299 511 014	White stripping cassette	4	8
R299 511 016	White stripping cassette	1.5	6.3
R299 512 000	Red stripping cassette		6

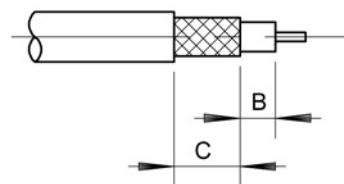
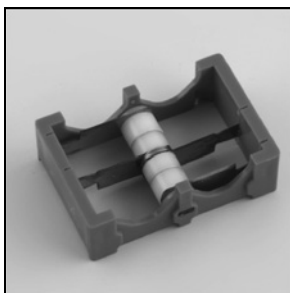


KIT R282 078 000 : STRIPPING TOOL FOR 7 TO 15 MM DIA. FLEXIBLE CABLES (without cassette)

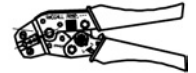


Part number	Designation
R299 078 000	STRIPPING TOOL 1 - Stripping tool 2 - Red V guide for dia ext.cable 7 to 9 mm 3 - Blue V guide for dia ext.cable 9 to 11.5 mm 4 - Yellow V guide for dia ext.cable 11.5 to 14 mm 5 - Two interior supports 6 - Adjustment bit 7 - Wrench

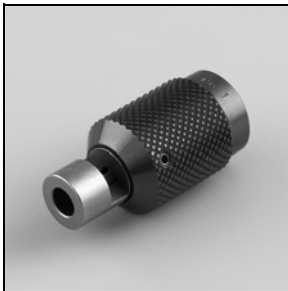
CASSETTES



Part number	Designation	Length B (mm)	Length C (mm)
R282 078 200	Green stripping cassette		10
R282 078 205	Green stripping cassette		8
R282 078 220	Green stripping cassette	2.5	8
R282 078 225	Green stripping cassette	12.5	8



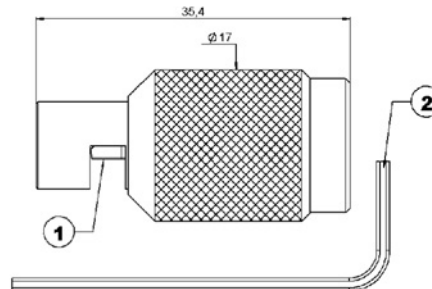
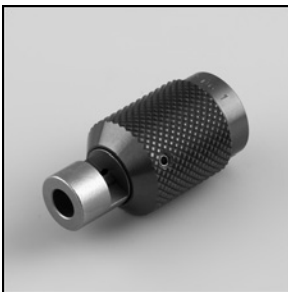
POINTER GAUGE FOR SEMI-RIGID CABLE



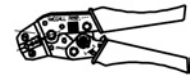
Cable group	Part number	Stripping length setting
.085"	R282 062 000	1.78 (.070)
	R282 062 010	1.3 (.051)
	R282 063 000	3.17 (.125)
.141"	R282 066 000	2.17 (.085)
	R282 066 010	4.5 (.177)
	R282 067 000	3.17 (.125)
.141" microporous	R282 067 010	3.17 (.125)
.116"	R282 071 000	2.17 (.085)
.250"	R282 074 000	5.1 (.200)
	R282 074 010	3 (.118)
	R282 074 020	4.5 (.177)

Specially designed for sharpening the end of the cable's center conductor, this sharpening tool-gauge is supplied with a removable blade whenever required.
Please specify P/N **R282 056 000** when ordering the replacement blade. Including Hex key.

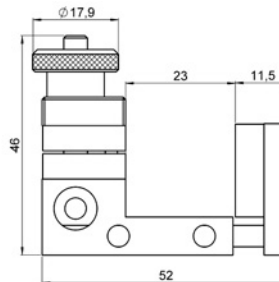
POINTER GAUGE FOR MICROPOROUS SEMI-RIGID CABLE



Cable group	Part number	Stripping length setting	Description
.085" microporous	R282 061 030	1.78 (.070)	1 - R282 056 085 - Replacement stripping blade
			2 - R282 344 127 - Hex 1.27 (.05)
.141" microporous	R282 067 030	2.17 (.085)	1 - R282 056 118 - Replacement stripping blade
			2 - R282 344 127 - Hex 1.27 (.05)

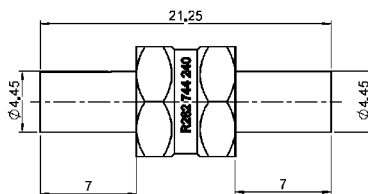
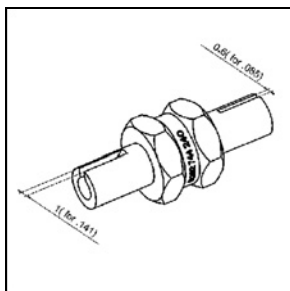


SOLDERING FIXTURE (JIG)



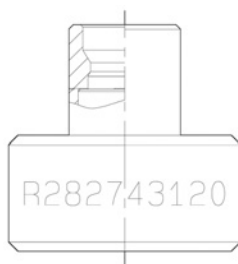
Cable group	Part number
.085"/.141"/.250"	R282 740 000
.141"/.250"/.350"	R282 740 030

LOCATOR TOOL FOR RIGHT ANGLE PLUG FOR SEMI-RIGID CABLES

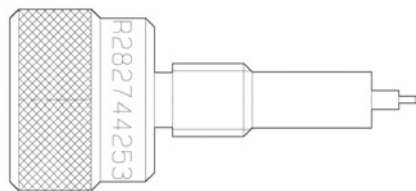


Part number
R282 744 240

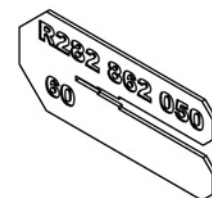
LOCATOR TOOL FOR SMP CONNECTORS



Locator tool for SMP

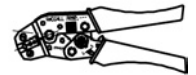


Locator tool for center contact

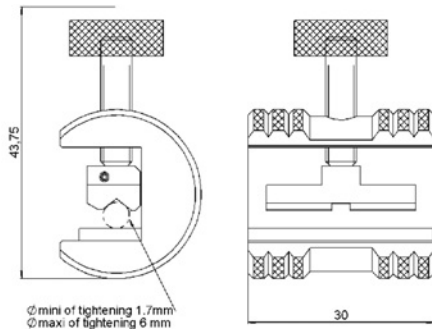


Solder gauge

Part number	Notes
R282 743 100	Locator tool for male SMP
R282 743 120	Locator tool for straight and right angle female SMP
R282 744 253	Locator tool for center contact female SMP
R282 744 254	Locator tool for center contact male SMP
R282 862 050	Solder gauge thick 0.3 (.012)
R282 862 120	Solder gauge thick 1.83 (.072)

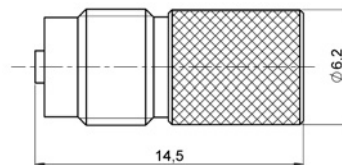
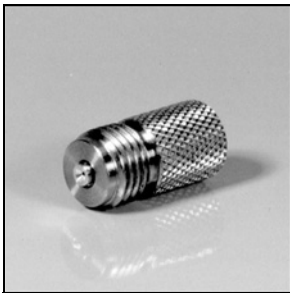


CABLE HOLDER



Part number
R282 059 010

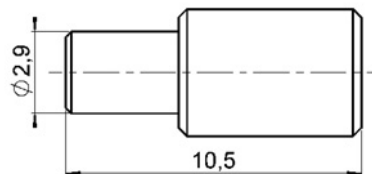
GLASS BEAD LOCATOR GAUGE



Part number	Glass bead pin diameter (mm)
R282 745 000	0.30

Suitable for hermetic screw-on type, panel feed through receptacles.
This tool holds and locate the glass bead in its mounting hole during soldering.

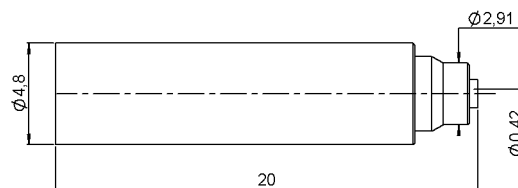
LOCATOR GAUGE FOR CENTER CONTACT



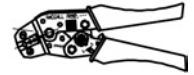
Part number
R282 860 000

Suitable for SMA 2.9 hermetic screw-on receptacles.
This tool provides centering of the center contact in the receptacle body during installation.

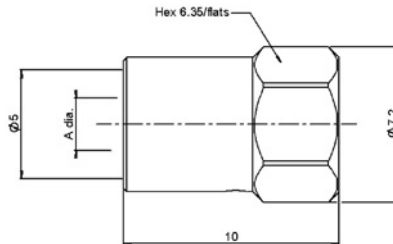
LOCATOR GAUGE SMP (full detent)



Part number
R282 860 020
R282 860 022
R282 860 024



SOLDERING LOCATOR TOOL FOR MICROPOROUS SEMI-RIGID CABLE



Cable group	Part number	Dimension A (mm)
.085" microporous	R282 744 190	2.4
.141" microporous	R282 744 192	3.8

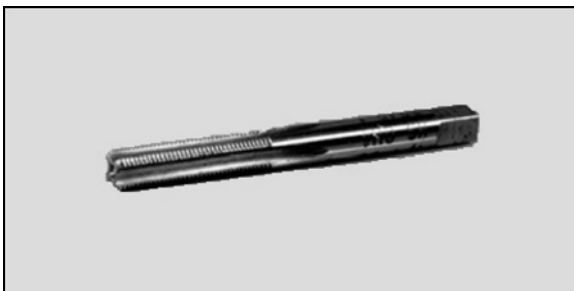
DRILLING TOOL FOR GLASS BEAD MOUNTING



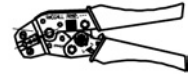
Part number	Dia. (mm)
R282 080 000	1.98

Must be used with machine tool to obtain the required concentricity and dimensions.

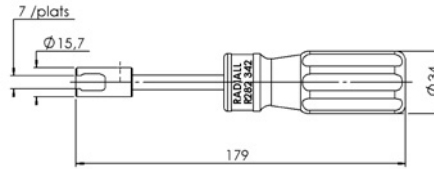
SCREW TAP FOR RECEPTACLE



Part number	Dimension
R282 082 000	1/4 36 UNS 2B

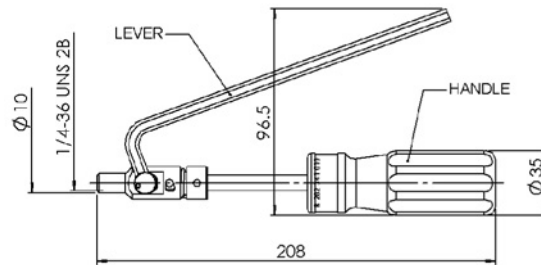


TORQUE SCREWDRIVER FOR HERMETIC RECEPTACLES



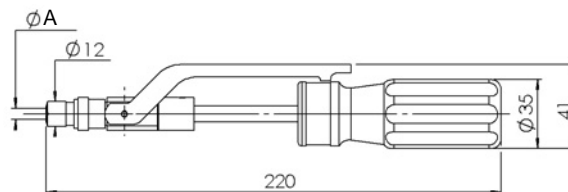
Part number	Coupling torque (N/cm)
R282 342 000	205
R282 342 010	280

INSTALLATION TOOL FOR PLUG RECEPTACLES

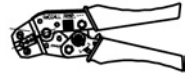


Part number	Coupling torque (N/cm)
R282 341 002	210
R282 341 010	190
R282 341 012	280

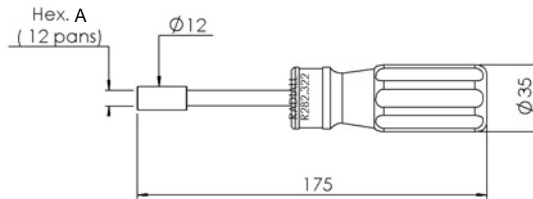
INSTALLATION TOOL FOR JACK RECEPTACLES



Part number	Coupling torque (N/cm)	Dimension A mm (inch)
R282 340 000	280	5.3 (.209)
R282 340 010	60	5.4 (.212)

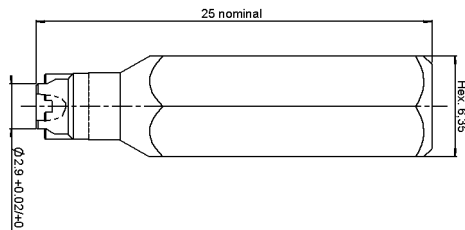
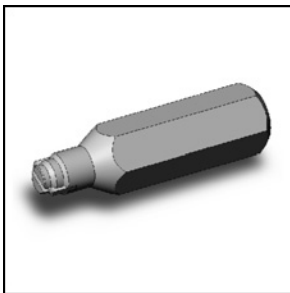


INSTALLATION TOOL FOR PLUG RECEPTACLES



Part number	Coupling torque (N/cm)	Dimension A mm (inch)
R282 322 000	280	8 (.315)
R282 322 010	60	

TORQUE SCREWDRIVER



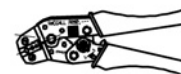
Part number	Note
R282 360 001	F max
R282 360 002	F moy
R282 360 003	F min

TIGHTENING TOOL



Part number
R282 202 000

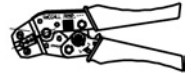
New universal plier which facilitate the tightening of coupling nuts.
The removable inserts are made of plastic in order to avoid damage on the knurling (for ≥ 130 Ncm).



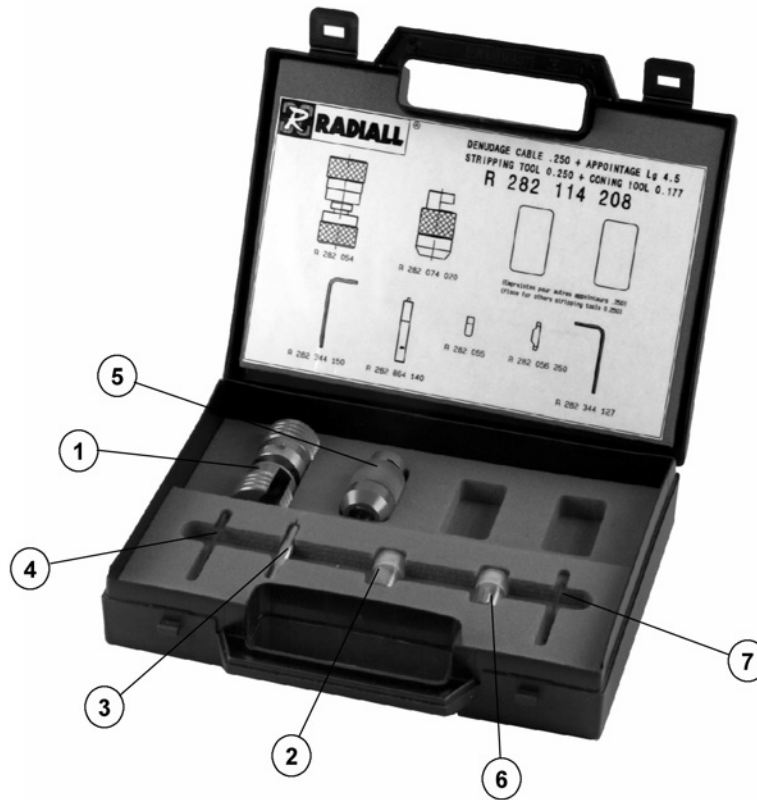
R282 102 000 : BENDING KIT



N°	Part number	Designation	Old cross reference	Mark
1	R282 750 000	Bending tool	730 11 000	(09)
2	R282 751 050	Bending gauge .085"	730 11 040	(02)
3	R282 751 051	Bending gauge .085"	730 11 030	(01)
4	R282 751 070	Bending gauge .141"	730 11 060	(04)
5	R282 751 080	Bending gauge .250"	730 11 070	(05)
6	R282 751 071	Bending gauge .141"	730 11 050	(03)



KIT : STRIPPING + SHARPENING FOR SEMI-RIGID CABLES

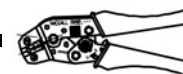


R282 114 121 : STRIPPING 1.78 (.070) + SHARPENING FOR .085" SEMI-RIGID CABLES

N°	Part number	Designation
1	R282 051 000	Stripping tool .085"
2	R282 055 000	Replacement stripping blade
3	R282 864 110	Blade installation gauge .085"
4	R282 344 150	Hex 1.5 (.059)
5	R282 062 000	Sharpening and length-setting tool 1.78 (.070)" long on .085"
6	R282 056 085	Replacement sharpening blade
7	R282 344 127	Hex 1.27 (.05)

R282 114 125 : STRIPPING 3.17 (.125) + SHARPENING FOR .085" SEMI-RIGID CABLES

N°	Part Number	Designation
1	R282 051 000	Stripping tool .085"
2	R282 055 000	Replacement stripping blade
3	R282 864 110	Blade installation gauge .085"
4	R282 344 150	Hex 1.5 (.059)
5	R282 063 000	Sharpening and length-setting tool 3.17 (.125)" long on .085"
6	R282 056 085	Replacement sharpening blade
7	R282 344 127	Hex 1.27 (.05)



R282 114 162 : STRIPPING 2.17 (.085) + SHARPENING FOR .141" SEMI-RIGID CABLES

N°	Part number	Designation
1	R282 053 000	Stripping tool .141"
2	R282 055 000	Replacement stripping blade
3	R282 864 120	Blade installation gauge .141"
4	R282 344 150	Hex 1.5 (.059)
5	R282 066 000	Sharpening and length-setting tool 2.17 (.085") long on .141"
6	R282 056 118	Replacement sharpening blade
7	R282 344 127	Hex 1.27 (.05)

R282 114 165 : STRIPPING 3.17 (.125) + SHARPENING FOR .141" SEMI-RIGID CABLES

N°	Part number	Designation
1	R282 053 000	Stripping tool .141"
2	R282 055 000	Replacement stripping blade
3	R282 864 120	Blade installation gauge .141"
4	R282 344 150	Hex 1.5 (.059)
5	R282 067 000	Sharpening and length-setting tool 3.17 (.125") long on .141"
6	R282 056 118	Replacement sharpening blade
7	R282 344 127	Hex 1.27 (.05)

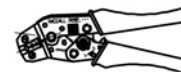
R282 114 168 : STRIPPING 4.5 (.177) + SHARPENING FOR .141" SEMI-RIGID CABLES

N°	Part number	Designation
1	R282 053 000	Stripping tool .141"
2	R282 055 000	Replacement stripping blade
3	R282 864 120	Blade installation gauge .141"
4	R282 344 150	Hex 1.5 (.059)
5	R282 066 010	Sharpening and length-setting tool 4.5 (.177") long on .141"
6	R282 056 118	Replacement sharpening blade
7	R282 344 127	Hex 1.27 (.05)

R282 114 185 : STRIPPING 3.17 (.125) + SHARPENING FOR .141" SEMI-RIGID CABLES

N°	Part number	Designation
1	R282 053 000	Stripping tool .141"
2	R282 055 000	Replacement stripping blade
3	R282 864 120	Blade installation gauge .141"
4	R282 344 150	Hex 1.5 (.059)
5	R282 067 010	Sharpening and length-setting tool 3.17 (.125") long on .141"
6	R282 056 118	Replacement sharpening blade
7	R282 344 127	Hex 1.27 (.05)

Inside the box, every part number can be ordered separately.



R282 114 204 : STRIPPING 3 (.118) + SHARPENING FOR .250" SEMI-RIGID CABLES

N°	Part number	Designation
1	R282 054 000	Stripping tool .250"
2	R282 055 000	Replacement stripping tool
3	R282 864 140	Blade installation gauge .250"
4	R282 344 150	Hex 1.5 (.059)
5	R282 074 010	Sharpening and length-setting tool 3 (.118") long on .250"
6	R282 056 250	Replacement sharpening blade
7	R282 344 127	Hex 1.27 (.05)

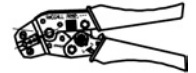
R282 114 207 : STRIPPING 5.1 (.200) + SHARPENING FOR .250" SEMI-RIGID CABLES

N°	Part number	Designation
1	R282 054 000	Stripping tool .250"
2	R282 055 000	Replacement stripping tool
3	R282 864 140	Blade installation gauge .250"
4	R282 344 150	Hex 1.5 (.059)
5	R282 074 000	Sharpening and length-setting tool 5.1 (.200") long on .250"
6	R282 056 250	Replacement sharpening blade
7	R282 344 127	Hex 1.27 (.05)

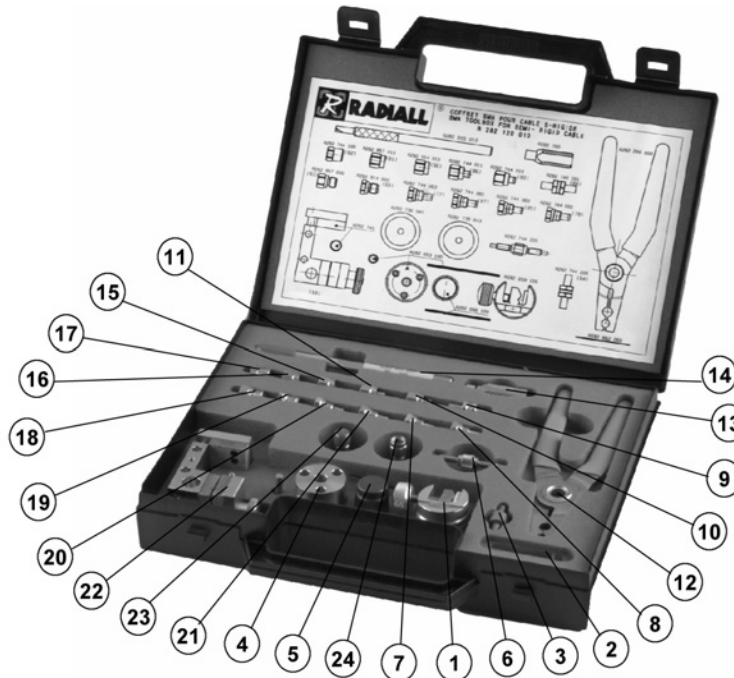
R282 114 208 : STRIPPING 4.5 (.177) + SHARPENING FOR .250" SEMI-RIGID CABLES

N°	Part number	Designation
1	R282 054 000	Stripping tool .250"
2	R282 055 000	Replacement stripping blade
3	R282 864 140	Blade installation gauge .250"
4	R282 344 150	Hex 1.5 (.059)
5	R282 074 020	Sharpening and length-setting tool 4.5 (.177") long on .250"
6	R282 056 250	Replacement sharpening blade
7	R282 344 127	Hex 1.27 (.05)

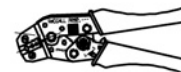
Inside the box, every part number can be ordered separately.



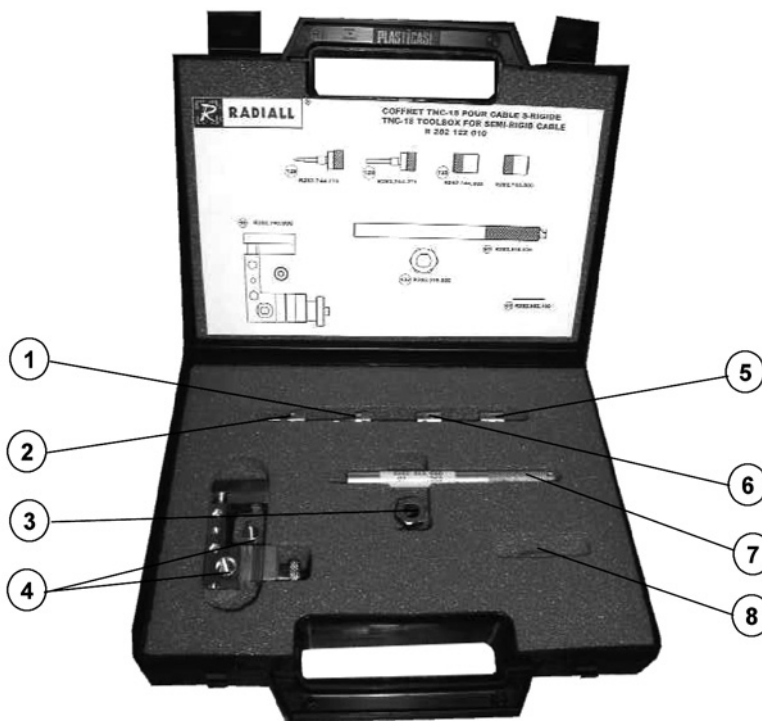
R282 120 010 : SMA SOLDER KIT (Suitable for commercial and standard SMA)



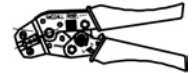
N°	Part number	Designation	Mark
1	R282 059 100	Cable holder	
2	R282 862 060	Solder gauge (cab .085": mark 61, cab .141": mark 62)	
3	R282 744 200	Soldering locator tool for right angle SMA	(84)
4	R282 053 100	Stripping tool	
5	R282 066 100	Trimmer	
6	R282 744 220	Soldering locator tool for center contact	
7	R282 744 060	Soldering locator tool for male SMA cable .085"	(85)
8	R282 744 062	Soldering locator tool for male SMA B cable .085"	(78)
9	R282 744 201	Soldering locator tool for right angle SMA B	(88)
10	R282 744 010	Soldering locator tool for female cable .085"	(80)
11	R282 744 011	Soldering locator tool for female cable .141"	(86)
12	R282 200 000	Retaining ring pliers	
13	R282 760 000	Retaining insert tool	
14	R282 915 010	Dielectric recess tool	
15	R282 914 010	Dielectric recess gauge for female	(92)
16	R282 857 010	Control gauge for female	(81)
17	R282 744 100	Soldering locator tool for male	(82)
18	R282 857 000	Control gauge for male	(83)
19	R282 914 000	Dielectric recess gauge for male	(93)
20	R282 744 063	Soldering locator tool for male SMA B cable .141"	(77)
21	R282 744 061	Soldering locator tool for male SMA cable .141"	(87)
22	R282 740 000	Soldering fixture	
23	R282 730 040	Dielectric insert tool + dielect. plunger for female	
24	R282 730 043	Dielectric insert tool + dielect. plunger for male	



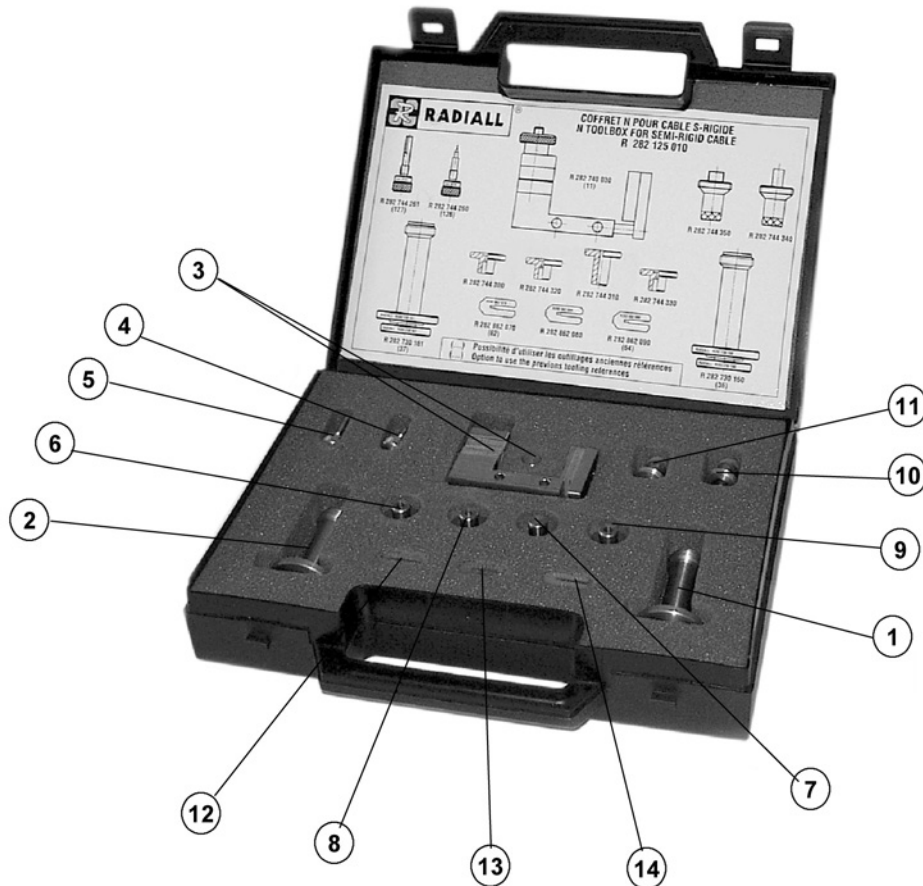
R282 122 010 : TNC 18 GHz SOLDER KIT



N°	Part Number	Designation	Mark
1	R282 744 271	Soldering locator tool for male	(128)
2	R282 744 270	Soldering locator tool for female	(129)
3	R282 370 020	Locking tool	(132)
4	R282 740 000	Soldering fixture	(10)
5	R282 744 000	Soldering locator tool for .085" cable	
6	R282 744 003	Soldering locator tool for .141" cable	(133)
7	R282 915 020	Dielectric recess tool	(97)
8	R282 862 100	Solder gauge	(63)

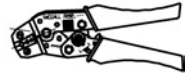


R282 125 010 : SOLDER KIT FOR N CONNECTORS

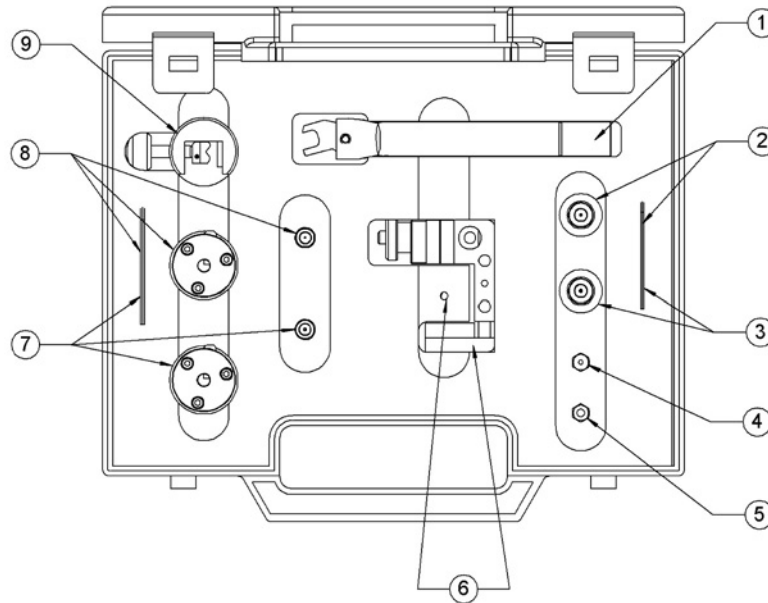


N°	Part number	Designation	Old cross reference	Mark
1	R282 730 160	.250" dielectric insertion tool + plunger for N jacks	730 25 007	(36)
2	R282 730 161	.141" dielectric insertion tool + plunger for N jacks	730 25 008	(37)
3	R282 740 030	Soldering fixture	730 15 022	(11)
4	R282 744 260	N soldering fixture for female centre contact	730 40 005	(126)
5	R282 744 261	N soldering fixture for male centre contact	730 40 006	(127)
6	R282 744 300	N soldering fixture for cable .085"		
7	R282 744 310	N soldering fixture for cable .141"		
8	R282 744 320	N soldering fixture for cable .141"		
9	R282 744 330	N soldering fixture for cable .250"		
10	R282 744 340	Soldering fixture for N plug cable .141"		
11	R282 744 350	Soldering fixture for N plug cable .250"		
12	R282 862 070	Solder gauge thickness 0.35 (.0138")	730 15 170	(62)
13	R282 862 080	Solder gauge thickness 0.45 (.0177")		
14	R282 862 090	Solder gauge thickness 0.70 (.0276")	730 15 180	(64)
15	R282 915 030	Dielectric recess tool for cable .141"		
16	R282 915 040	Dielectric recess tool for cable .250"		

Inside the box, every part number can be ordered separately.



R282 120 220 : SMA 2.9 SOLDER KIT FOR MICROPOROUS SEMI-RIGID CABLES

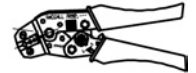


N°	Part number	Designation
1	R282 323 000	Torque wrench
2	R282 061 030	Pointer gauge for cable .085" microporous
3	R282 067 030	Pointer gauge for cable .141" microporous
4	R282 744 190	Soldering locator tool cable .085"
5	R282 744 192	Soldering locator tool cable .141"
6	R282 740 000	Soldering fixture
7	R282 053 030	Stripping tool cable .141" microporous
8	R282 051 030	Stripping tool cable .085" microporous
9	R282 059 010	Cable holder

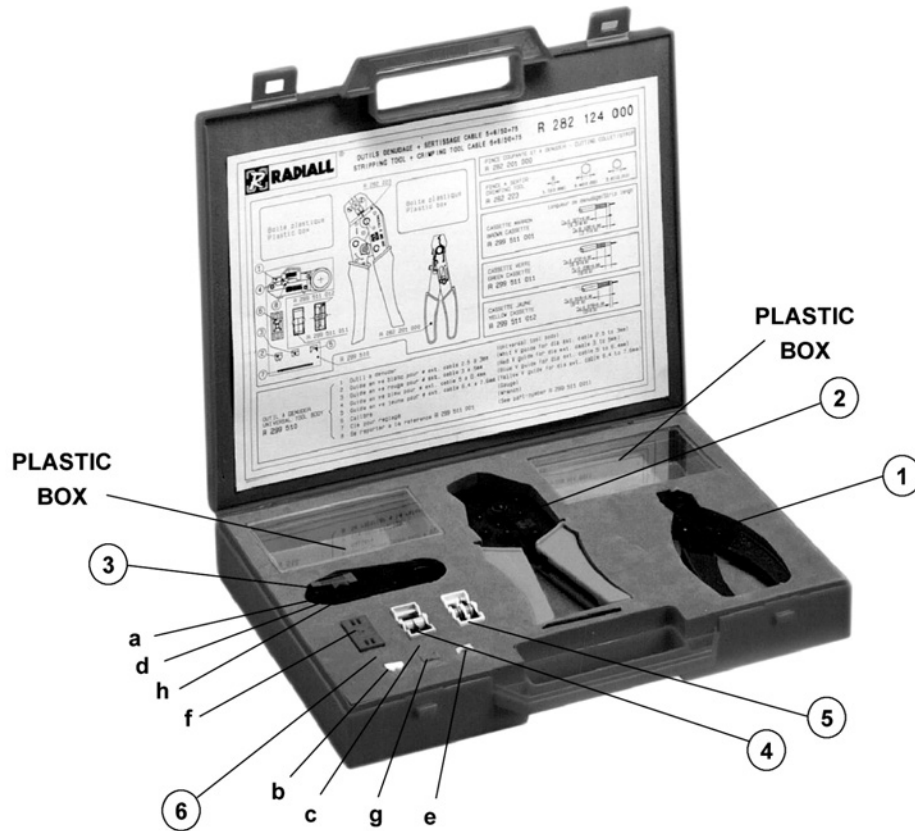
R282 120 200 : SMA 2.9 SOLDER KIT SEMI-RIGID CABLE

Suitable for our previous kapton : SMA 2.9 range only.

N°	Part number	Designation
1	R282 323 000	Torque wrench
2	R282 071 000	Pointer gauge for cable .116"
3	R282 061 000	Pointer gauge for cable .085"
4		Soldering locator tool cable .116"
5		Soldering locator tool cable .085"
6	R282 740 010	Soldering fixture
7	R282 057 000	Stripping tool cable .085"
8	R282 058 000	Stripping tool cable .116"
9	R282 059 000	Cable holder

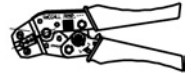


R282 124 000 : STRIPPING + CRIMPING KIT FOR CABLES 5/50S+D & 6/75+93S+D

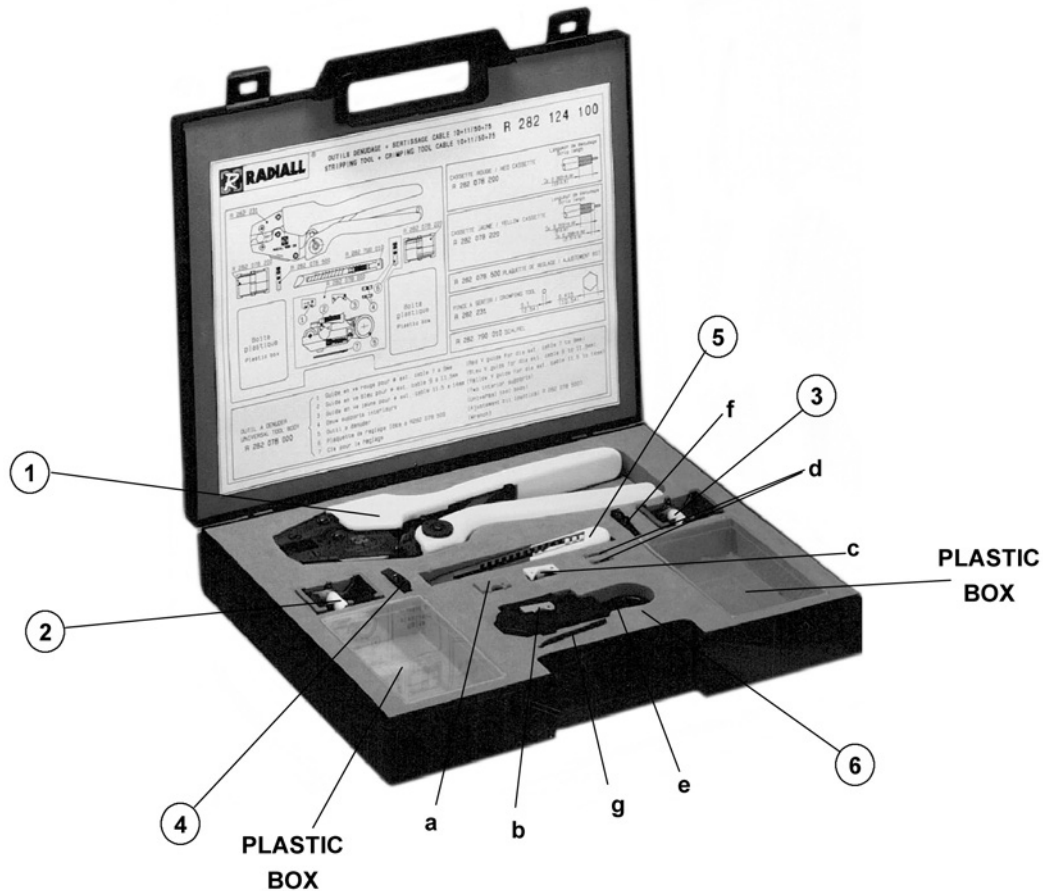


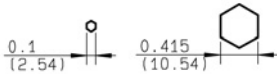
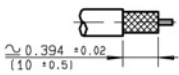
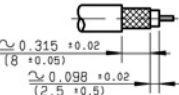
N°	Part number	Designation
1	R282 201 000	Cutting collet/strip
2	R282 223 000	Crimping tool
3	R299 511 001	Brown stripping cassette 0.327/0.106
4	R299 511 011	Green stripping cassette 0.272/0.236
5	R299 511 012	Yellow stripping cassette 0.315/0.079
6	R299 510 000	Universal tool body a - Universal tool body b - Whit V guide for dia ext. cable 2.5 to 3 mm c - Red V guide for dia ext. cable 3 to 5 mm d - Blue V guide for dia ext. cable 5 to 6.4 mm e - Yellow V guide for dia ext. cable 6.4 to 7.6 mm f - Gauge g - Wrench h - See part-number R299 511 001

Inside the box, every part number can be ordered separately.

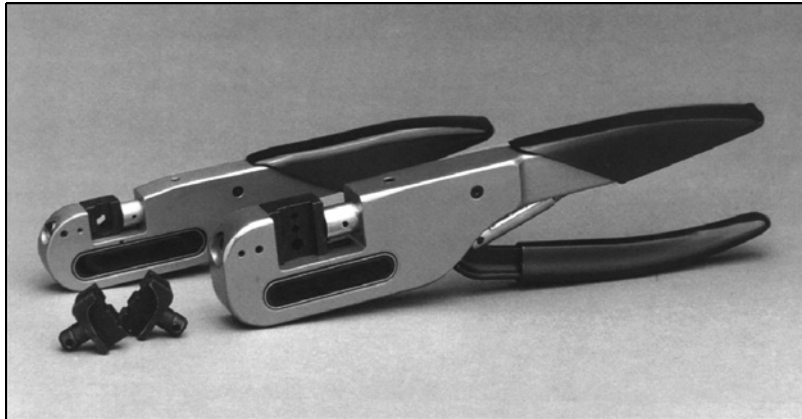
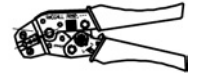


R282 124 100 : STRIPPING + CRIMPING KIT FOR CABLES 10+11/50/S+D

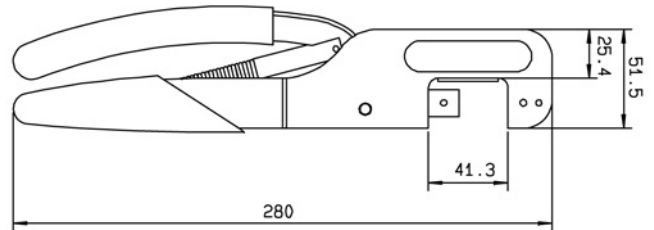


N°	Part number	Designation
1	R282 231 000	Crimping tool 
2	R282 078 200	Green stripping cassette 
3	R282 078 220	Green stripping cassette 
4	R282 078 500	Adjustment bit
5	R282 790 010	Scalpel
6	R282 078 000	Universal tool body a - Red V guide for dia ext. cable 7 to 9 mm b - Blue V guide for dia ext. cable 9 to 11.5 mm c - Yellow V guide for dia ext. cable 11.5 to 14 mm d - Two interior supports e - Universal tool body f - Adjustment bit (Identical R282 078 500) g - Wrench

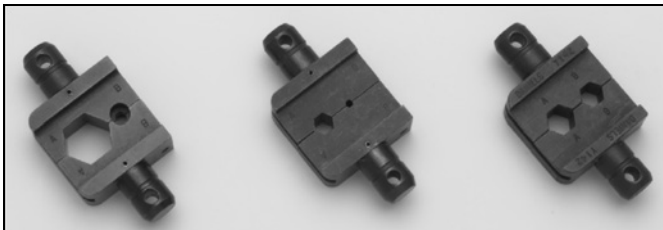
Inside the box, every part number can be ordered separately.

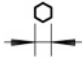
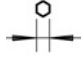


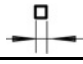
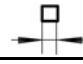
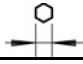
MIL CRIMP TOOL (M22520/5-01) R282 293 000 (dies not included)

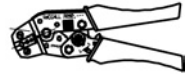


DIES



Part number	Cable group		
R282 235 003	2/50/S + D - 2.6/50 + 75/S	3.25 (.128)	2.67 (.105)
R282 235 009	3.5/75 - 3.8/75	4.52 (.178)	1.73 (.068)
R282 235 011	5/50/S - 5/50/D	5.41 (.213)	1.73 (.068)
R282 235 013	6/75/S	6.48 (.255)	1.73 (.068)
R282 235 037	2.6/50/D	7.98 (.314)	3.84 (.151)
R282 235 116	10/50/D - 10/75/S - 10.3/50/S - 11/50/D	10.54 (.415)	2.54 (.1)
R282 235 160	3.2/50/S	6.38 (.251)	4.27 (.169)
R282 235 166	15.2/50/S	15.49 (.610)	

Part number	Cable group			
R282 235 905	2/50	0.71 (.028)	0.54 (.021)	3.25 (.128)
R282 235 906	2.6/50	0.71 (.028)	1.6 (.063)	3.25 (.128)



CRIMP TOOL (dies included)

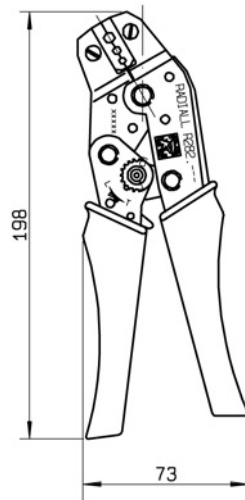


Fig. 1

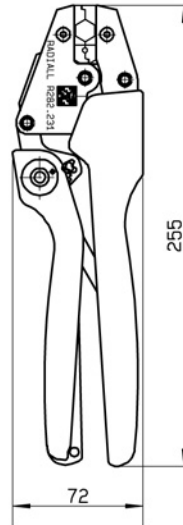


Fig. 2

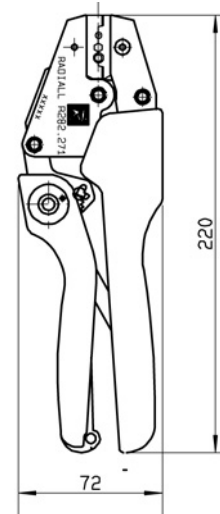
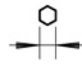
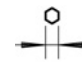
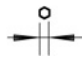
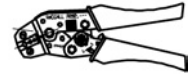


Fig. 3

Part number	Fig.	Cable group	Color of handles			
R282 211 000	1	1/50+75 - 2/50/S+75 - 2.6/50/S+75	Red	4.52 (.178)	3.25 (.128)	2.67 (.105)
R282 223 000		4/50+75 - 5/50 - 6/75+93	Orange	6.48 (.255)	5.41 (.213)	1.73 (.068)
R282 227 000	3	8/75+95	Blue	8.23 (.324)		1.73 (.068)
R282 227 010		3.7/75 - 4.6/75 - 6/75 - 6.7/75	Black	7.01 (.280)	5.41 (.213)	1.73 (.068)
R282 228 000	1		Blue	5.96 (.235)		1.97* (.078)
R282 231 000	2	10/50 D - 10.3/50 S - 11/50 D	Yellow	10.54 (.415)	2.54 (.1)	
R282 271 000	3	2/50+75 - 2.6/50+75 S+D	Black	3.84 (.131)	3.25 (.128)	0.72* (.028)

* Square crimping print.

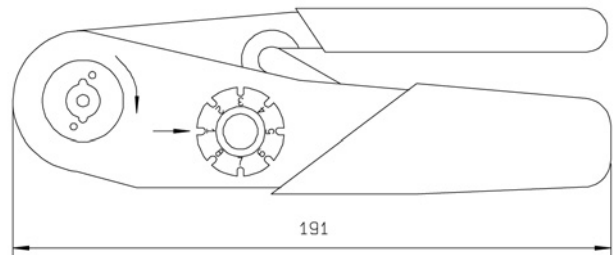
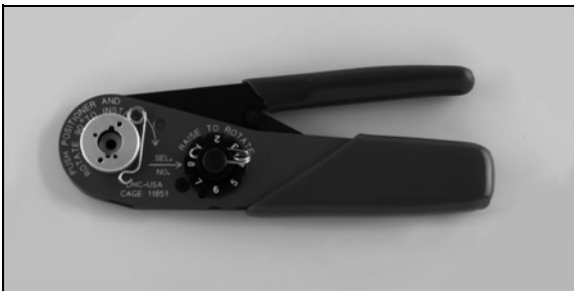


MIL CRIMP TOOL (M22520/1-01) R282 291 000 (for center contact)



Part number	Length (mm)	Positioner three color position included
R282 291 000	250	Red
		Blue
		Grey

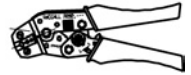
CRIMP TOOL FOR CENTER CONTACT R282 281 000



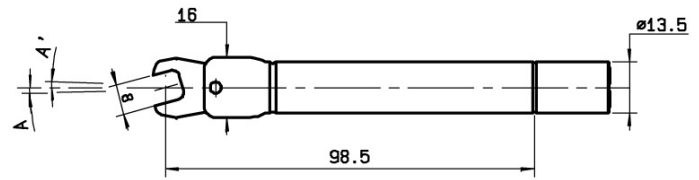
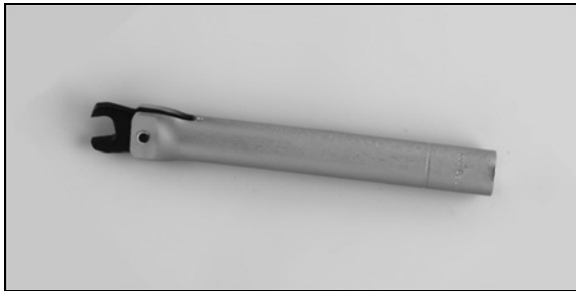
LOCATOR TOOL FOR CENTER CONTACT CRIMP TOOL R282 281 000



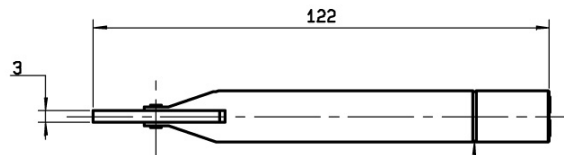
Part number	
R282 967 010	R282 967 060
R282 967 012	R282 967 070
R282 967 013	R282 967 080
R282 967 015	R282 967 081
R282 967 016	R282 967 090
R282 967 030	R282 967 091
R282 967 034	R282 968 000
R282 967 040	R282 968 020
R282 967 050	R282 983 000



TORQUE WRENCH 5 to 10 mm

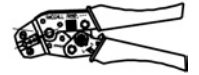


A A' angular sweep approximately 2°

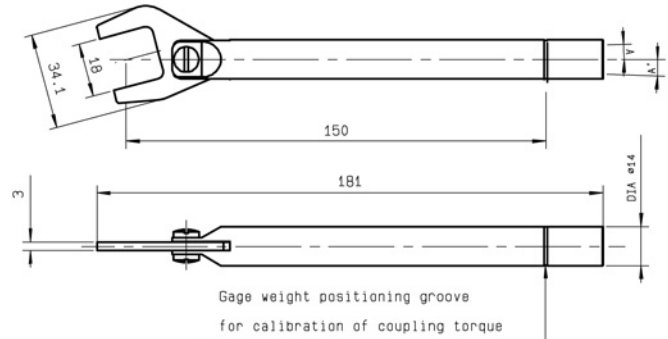


Gauge weight positioning groove for calibration of coupling torque

Part number	Accross flats (mm)	Coupling torque (N.cm)
R282 311 010	5.5 (.217)	63 to 70
R282 317 015		150
R282 318 000	6 (.236)	30
R282 318 010		58 to 62
R282 319 000	6.35 (.250)	60 to 80
R282 319 010		58 to 62
R282 320 000	8 (.315)	80 to 120
R282 320 010		100 to 110
R282 320 011		150
R282 320 020		200
R282 320 030		60
R282 320 031		70
R282 320 032		80
R282 320 040		40
R282 321 010	5 (.197)	63 to 70
R282 321 011		40
R282 321 020		200
R282 323 000	6.5 (.256)	80 to 120
R282 324 000	9.6 (.378)	80 to 120
R282 324 001		150
R282 324 002		170

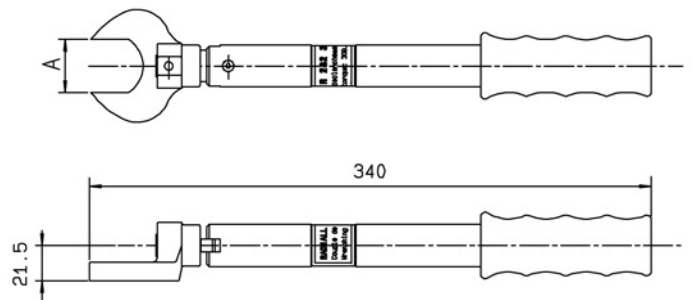


TORQUE WRENCH 10 to 20 mm

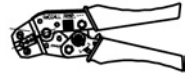


Part number	Accross flats (mm)	Coupling torque (N.cm)
R282 300 000	14 (.550)	265
R282 303 000	19 (.750)	160
R282 303 010		130
R282 303 011		170
R282 303 020	18 (.710)	170
R282 303 021		130
R282 303 030	16 (.630)	150
R282 303 040	12 (.472)	150
R282 303 041	12.7 (.500)	80
R282 303 042		250
R282 303 050	11 (.433)	150
R282 303 060	10 (.394)	170

TORQUE WRENCH 18 to 32 mm



Part number	Accross flats A (mm)	Coupling torque (N.cm)
R282 303 220	18 (.710)	950
R282 303 400	25 (.984)	2500
R282 303 500	32 (1.260)	3500
R282 303 520	27 (1.060)	3000
R282 303 530	32 (1.260)	2500 to 3000



EXTRACTION TOOL

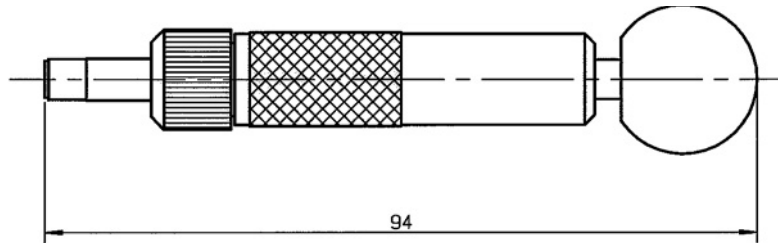


Fig. 1

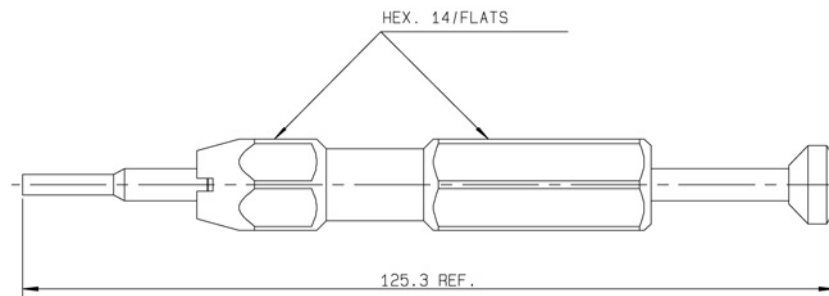


Fig. 2

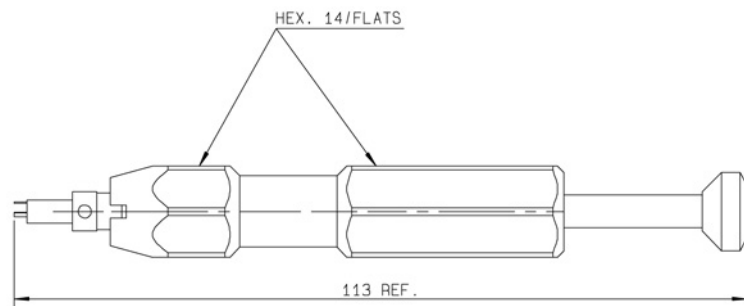
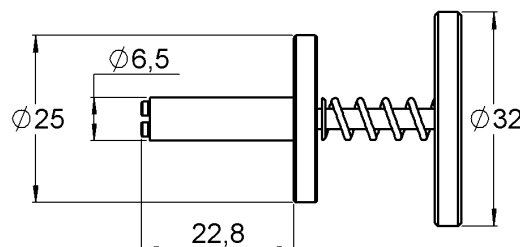
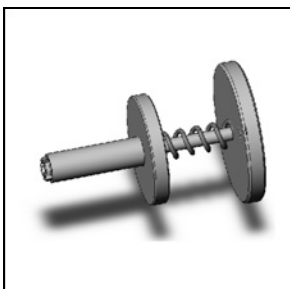


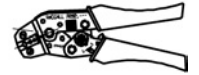
Fig. 3

Part number	Fig.	Use	Note
R282 918 000	1		For removing BMA floating plugs
R282 918 020	1		For removing SBMA floating plugs
R282 920 010	2	U01	For male COAXIPACK 2 inserts
R282 920 100	3	U02	For female COAXIPACK 2 inserts
R282 920 200	1	U03	For female DIN 41626 inserts

SMP DISENGAGEMENT TOOL FOR R222 705 000



Part number
R282 918 100



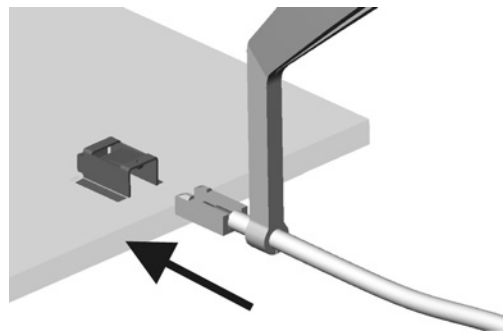
FAKRA/SMB CARLOCK INSERTION TOOL



Part number
R282 902 100

For mounting of the straight coax-inserts in housing (only to use it for 2.6/50 cable)

UMP INSERTION TOOL



Part number
R282 203 020

This optional tool allow to be more precise for connection in a limited space

UMP EXTRACTION TOOL



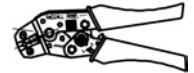
Photo 1



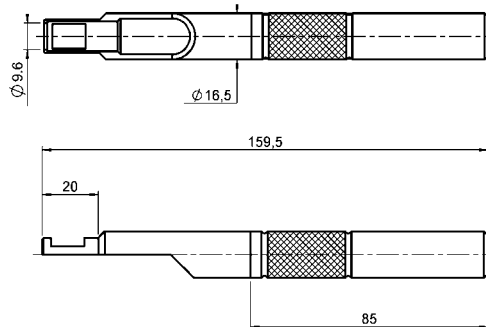
Photo 2

This tool only applies to lock version. No tool needed for UMP snap of slide versions

Part number	Photo	Note	To disconnect
R282 867 020	1	Axial disconnection	H2
R282 867 030	2	Lateral disconnection	H2, H2.6 & H3



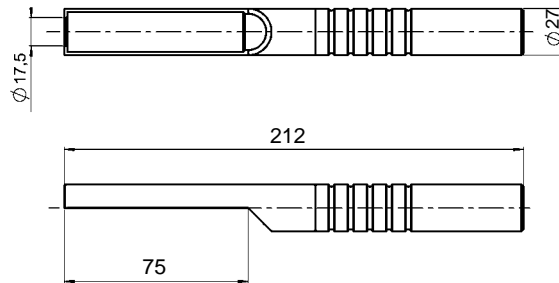
QMA EXTRACTION TOOL (optional for high density applications)



Part number
R282 868 230

This tool can be used with either straight or right angle connectors.

QN EXTRACTION TOOL



Part number
R282 868 240

This tool can be used with either straight or right angle connectors.

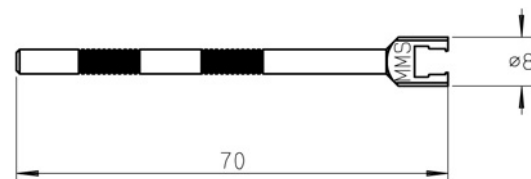
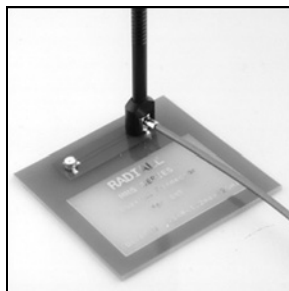
EXTRACTION TOOL FOR RIGHT ANGLE CONNECTORS AND CAP MOUNTING



Part number	Flat dimension : inch (mm)
R282 868 000	.276 (7)

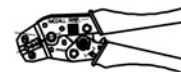
This tool has two functions
 - fitting of covers on right angle connectors,
 - extraction of these models after coupling.

MMS AND MMT EXTRACTION TOOL

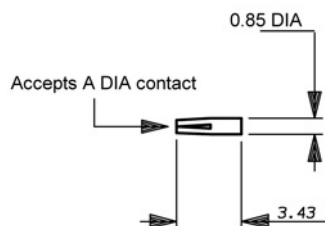
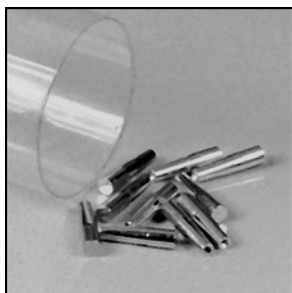


Part number	Series
R282 868 030	MMT
R282 868 100	MMS

Materials and finish : black anodized aluminium.
 The anodization allows the electric insulation and protects from the oxidation.

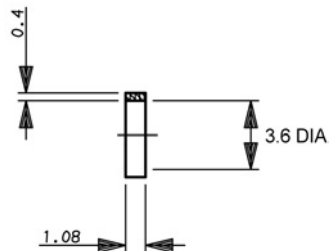


OPTIONAL SOCKET



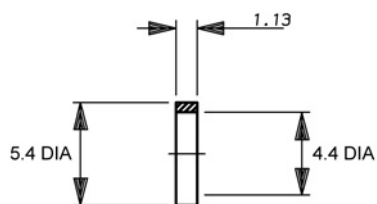
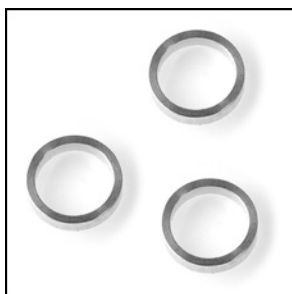
Part number	Dimension A (mm)	Packaging
R280 469 000	0.30	10 pieces
R280 469 010	0.46	

EMI/RFI GASKET

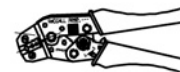


Part number	Packaging
R282 510 000	10 pieces

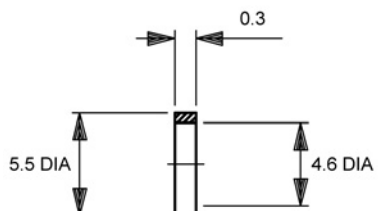
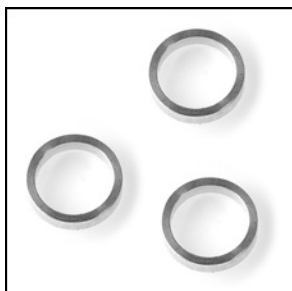
COMPRESSION GASKET



Part number	Packaging
R282 515 000	10 pieces

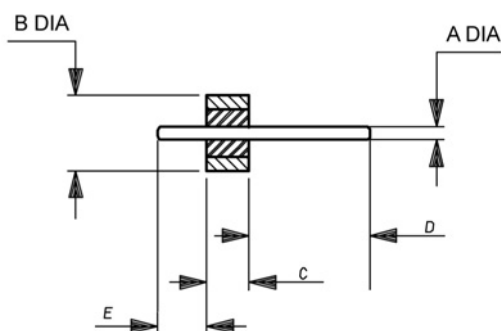


CONFORMABLE GASKET FOR HERMETIC RECEPTACLE

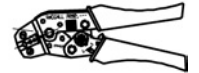


Part number	Packaging
R282 900 030	10 pieces

GLASS BEAD



Part number	Dimensions mm (inch)				
	A	B	C	D	E
R280 751 000	0.3 (.012)	2.52 (.099)	1.6 (.063)	4.57 (.180)	1.83 (.072)
R280 751 070 <i>NEW</i>		2.5 (.098)	1.59 (.062)		
R280 755 000		2.85 (.112)	1.6 (.063)		
R280 755 050 <i>NEW</i>	0.46 (.018)	2.8 (.110)	1.53 (.060)	1.77 (.070)	2.05 (.081)
R280 757 060 <i>NEW</i>	0.5 (.019)	4 (.157)	1.77 (.070)		2.03 (.080)
R280 757 070 <i>NEW</i>					1.93 (.076)
R280 757 080 <i>NEW</i>				5.82 (.230)	



INSULATED WASHERS

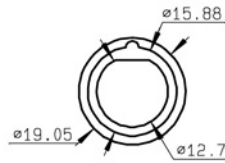


Fig. 1

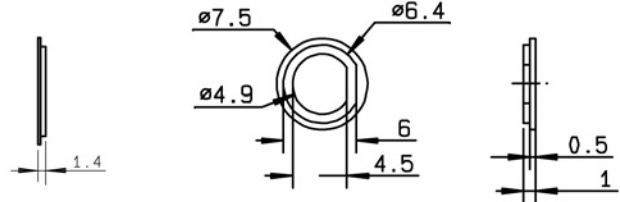


Fig. 2

Part number	Fig.	To be used on	Material	Packaging
R280 907 000	1	R141 304 000	Nylon	100 sets (200 washers)
		R141 323 000		
		R141 324 000		
		R141 327 000		
		R141 332 161		
		R141 332 500		
R280 902 010	2	R114 311 000	Nylon	100 sets (200 washers)
		R114 312 000		
		R114 313 000		
		R114 553 000		
		R114 553 010		
		R114 553 134		
		R114 554 000		
		R116 553 000		

SOLDER TAG

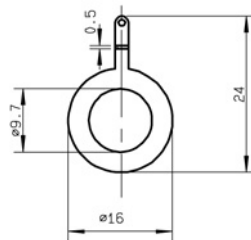


Fig. 1

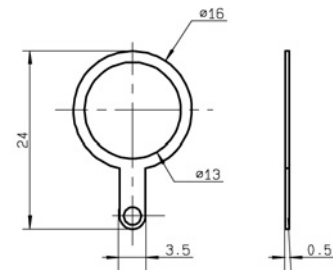
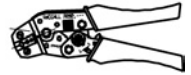
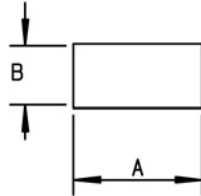
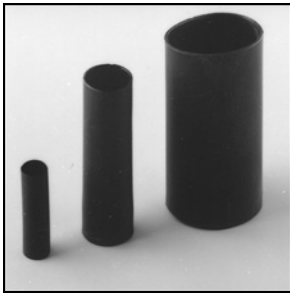


Fig. 2

Part number	Fig.	To be used on	Finish	Packaging
R280 490 020	1	R141 301 000	Nickel	100 units
		R141 303 503		
		R141 306 000		
		R141 306 503		
		R141 308 000		
		R141 331 400		
		R141 557 000		
		R141 563 161		
R280 490 030	2	R141 304 000	Nickel	100 units
		R141 323 000		
		R141 324 000		
		R141 327 000		
		R141 331 500		
		R141 332 161		
		R141 332 500		
		R141 338 000		
		R141 554 000		
		R141 676 121		
		R141 676 423		
		R141 603 000		
		R141 605 000		
R141 625 000				
R141 680 000				
R142 306 500				
R142 306 503				
R142 306 520				
R142 562 000				
R142 239 000				
R142 331 011				
R142 334 161				
R142 720 000				



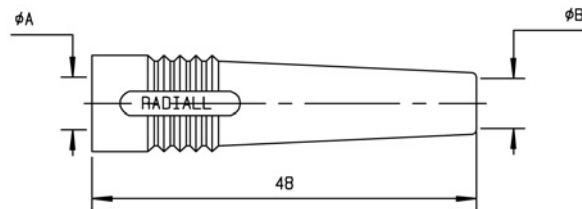
HEATSHRINK SLEEVES



These heatshrink sleeves guarantee an IP65 moisture resistance on crimp type models and an IP 67 moisture resistance on clamp type models.

Cable group	Part number	A	B	Packaging
2/50	R280 637 010	3.2	22	100
2.6/50	R280 637 020	4.8	22	
5/50 - LMR200 - 3.2/50	R280 637 030	6.4	25.4	
10/50 - 11/50 - LMR400 - 1/4"spiraled	R280 637 040	12	45	
3/8" superflexible corrugated - 1/2" superflexible corrugated - LMR600	R280 637 050	24	50	

BOOTS (material : PVC)



Color	Cable group		
	2.6/50 A : 5.4 - B : 2.6	5/50 A : 5.4 - B : 5.1	6/75 A : 6.5 - B : 6.2
Black	R280 566 000	R280 570 000 *	R280 590 000
Red	R280 566 001	R280 571 000	R280 591 000
Green	R280 566 002	R280 572 000	R280 592 000
Blue	R280 566 003	R280 573 000	R280 593 000
Yellow	R280 566 004	R280 574 000	R280 594 000
Grey	R280 566 005	R280 575 000	R280 595 000
White	R280 566 006	R280 576 000	R280 596 000
Brown	R280 566 007*	R280 577 000	R280 597 000
Orange	R280 566 008*	R280 578 000	R280 598 000
Violet	R280 566 009*	R280 579 000	R280 599 000
Nature	R280 566 010*	R280 580 000*	R280 600 000

Standard packaging = 10 pieces - * packaging = 100 pieces.

• Upon request